

Annual Report

January - December 2022

www.gsmwolverhampton.org.uk



Contents

Reference & Administrative Information	3
Trustees' Report	4 - 10
Independent Examiners' Report	11
Statement of Financial Activities	12
Balance Sheet	13
Statement of Cash Flows	14
Notes to the Financial Statements	15 - 20

Reference & Administrative Information

Charity Registration 1165909

Principal Address

65 Waterloo Road
Wolverhampton
WV1 4QU

Trustees Who Held Office During The Year

Brother Charles Searson
Brother Malachy Brannigan
Brother Robert Moore
Hetty Dodd
Lynne Moran
Nigel Tinsley (Chair)
Vivienne Brown

Chief Executive

Tom Hayden CMgr FCMl

Independent Examiner

Cotterell & Co Chartered Accountants
The Curve
83 Tempest Street
Wolverhampton

Bankers

Lloyds Bank
Queens Square
Wolverhampton

Barclays Bank
Lichfield Street
Wolverhampton



Trustees' Report

Structure Governance & Management

The charity is registered as a Charitable Incorporated Organisation (CIO) and is governed by the Constitution registered with the Charity Commission in October 2021.

The organisation is governed by Trustees with the day to day management of the charity delegated to a Chief Executive. The Trustees have a wide range of skills and experience related to our work and meet a minimum of four times per year to ensure the charity is meeting its responsibilities. A subcommittee led by the Chair of Trustees meets quarterly to review finance, fundraising, and prepare financial information for the Board.

Our Chief Executive has over 14 years' experience working in the third sector and is supported by a Business and Finance Manager, a Project Manager, and four Team Leaders that manage the day-to-day services. Our management team is made up of a 50% ratio of males and females.

Our Purposes & Activities

The Good Shepherd has a long history of supporting the most disadvantaged people in Wolverhampton and Christmas Eve 2022 marked the 50th anniversary of the Little Brothers of the Good Shepherd opening a night shelter in the city. Our mission is to end homelessness, support recovery, and create pathways out of poverty. We achieve this by providing crisis support including food, practical support, and interventions to relieve homelessness, support to prevent people from becoming homeless, and interventions and activities that support recovery

from homelessness, mental health, and addiction.

Our key strategic goals are:

- To be a provider of quality care and support driven by our values
- To be a trusted and responsible employer
- To be an innovative and dynamic charity
- To remain a strong and financially viable charity

Our Work

Wolverhampton is a diverse city, and we have people access our services from 61 different countries of origin. There's a fantastic community spirit and sense of togetherness and we work closely with local partners from grassroots voluntary groups through to the local authority and statutory partners. Because we've been in the city for so long, we have an excellent relationship with the local community, charities, community groups, and the people that use our services.

Wolverhampton has real strengths, but it's also a deprived city with high levels of poverty and inequality putting in the top 10% of deprived areas in England. Wolverhampton has some of the highest unemployment rates in the country with the youth



unemployment rate almost double the national average. These challenges drive our work, and we support people who are marginalised and disadvantaged including people experiencing homelessness, poor mental health, migrants and new communities, unemployed/low incomes, families with support needs, and people with complex and multiple needs.

Over the last five years we have redefined the charity looking at our structure, our strengths, and the needs of our community. Our aim is to provide the best possible service to the people

that walk through our doors, and to ensure our service users voices are heard. As an organisation we're committed to a Psychologically Informed Environment (PIE). We want people that access the Good Shepherd to feel supported in line with our values, specifically in a way that is hospitable, compassionate, that they are respected, there is trust, we operate with integrity, and that they are involved and engaged with the service.

In 2022 we developed a new PIE plan with support from Consultant Clinical Psychologist Dr Michelle Ginty. Two half day sessions were facilitated by Dr Ginty in February and March 2022 to evaluate the organisations strengths, areas of development, and ambitions, regarding the five key elements of PIE and to explore practical and measurable ways of embedding PIE in the organisation and aligning it with the charity's vision, mission, and values.

50 Years Of Good

The year 2022 marked 50 years since the Good Shepherd first started providing support in Wolverhampton. As a result, a range of different celebration events were held during the year both as fundraisers but also to raise awareness of the charity's continuing role within the local community.



The year began with a Service of Thanksgiving held at the Good Shepherd and attended by different faith leaders and finished with a service of celebration staged at St Peter's Collegiate Church in the City Centre. Both events offered the opportunity for people from the Good Shepherd's history to come together and reflect on the impact which the charity has had across half a century, as well as looking to the future.

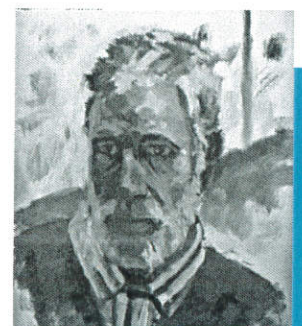
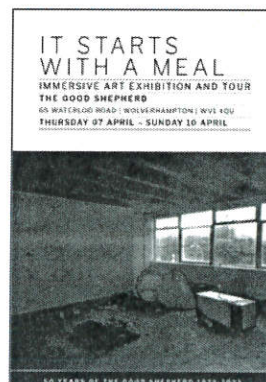
British Art Show

Another undoubted highlight of 2022 was the Good Shepherd's participation as one of the ambassadors for the British Art Show - BAS9. The show was hosted in Wolverhampton and the charity worked with the School of Art at the University of Wolverhampton and Wolverhampton Art Gallery so that service users could experience multimedia art workshops.



During BAS9, Good Shepherd were thrilled to host its own four-day exhibition at our centre on Waterloo Road. Service users who attend the art and photography classes co-produced the exhibition with members of the Good Shepherd team, local artists, and volunteers, with visitors able to sample a fully immersive experience showcasing the realities of homelessness in Wolverhampton.

It was one of the biggest and most complex projects the charity has ever delivered but which proved a resounding success. Comments from visitors included 'very impressive, inspirational and humbling', 'motivating, compassionate and expressive' and 'what a heartfelt exhibition - it really was quite moving.'



Support Services

"The Good Shepherd have done that much for me, from putting the clothes on my back to food in my stomach, letting me come and talk when I am stressed out and spitting fire, having someone there that I can have a cry to and a moan to."

Darryl



Housing First

During 2022 we continued to deliver a Housing First service in Wolverhampton which has been extremely successful. We believe that everyone deserves a home, and that housing is a universal right, and we're proud to deliver this service for people experiencing severe and multiple disadvantages. Alongside Wolverhampton Homes we've housed and supported 45 people with a long-term history of street homelessness and complex needs into their own accommodation. Our team continues to provide person-centered support to help them take the next steps in their journey.

LEAP

In January 2022 we launched LEAP - standing for Lived Experience into Action Project. It's an exciting new five-year project which helps prevent homelessness and activate lived experience. This project offers individuals with lived experience of homelessness and other issues the chance to undergo



training on our programme and move into a position where, not only can they access employment opportunities, but they can support Good Shepherd service users having previously been in their position.

LEAP provides rapid access to housing interventions, develops a peer mentor project, and creates an expert panel and forum for people who've experienced homelessness and multiple disadvantages.

Peer Support - Liaison & Diversion Scheme

In August we successfully tendered for a new project working alongside the Black Country Healthcare NHS Foundation Trust to employ and train Peer Support Workers with lived experience of mental health and offending to be placed in the Liaison and Diversion (L&D) team. The L&D team works across courts, police stations, and community settings to support people with mental health and other vulnerabilities who are in the criminal justice system and help them access the support they need.

We employed and placed two individuals with the team to provide peer support and lived experience mentoring and trained a further three volunteers to engage with forums, give expert feedback, and be involved in interview panels for the NHS Trust including interviewing for the new Clinical Lead post.

Our work with LEAP and providing Peer Support Workers with lived experience for the NHS Mental Health Liaison and Diversion scheme has increased the number of people with lived experience we employ to more than half of our entire team. Building on this we will continue to offer volunteering and employment opportunities for people with lived experience at the Good Shepherd and explore opportunities to deliver more of this work.

For the past two years, we've run a project called New Start providing intensive support for adult offenders with a history of homelessness and rough sleeping, many of whom have complex issues. We also work with Private Rented Sector (PRS) landlords in Wolverhampton and tenants in PRS to provide a landlord mediation service and support for tenants to reduce evictions and provide access to affordable quality PRS accommodation for people who are homeless.

Food Service

The Food Service continues to offer regular food support to both individuals and families, with an overall increase in need in the last year, largely due to the cost-of-living crisis.

We have been able to sustain the service and, so far meet the increased demand for food thanks to strong links with a diverse range of food supporters throughout the City. Once again, a large proportion of our food supplies came from community

donations - particularly at Harvest and Christmas - for which we are sincerely grateful.

Our network of support services continued to grow in the last year, and we welcome a variety of partner agencies to the Good Shepherd each week to provide advice and guidance to clients that visit the Food Service, including housing support, substance misuse services and a dentist.

Looking ahead, we will continue to grow our network of food partners and supporters in order to help those that need us, whilst working with our clients to build resilience and create sustainable pathways out of poverty.

Our Team

Our team of staff and volunteers are a huge asset and it's important that they feel valued, supported, and have access to training and development opportunities. This year we took the team for a staff away day to reflect on our mission, vision, and values before in the afternoon taking part in some games and activities together. We also continued the monthly staff get-togethers where we provide lunch or breakfast for the team to get together, share a meal, build relationships and offload.

Our Volunteers

During 2022 we were supported by over 80 volunteers including more than 40 individuals who regularly volunteered, 5 service user volunteers, 5 LEAP Peer Navigators, and 32 corporate volunteers from local organisations and businesses. Collectively they contributed a staggering 7,213 hours of their time.

What is also a hugely valuable part of the Good Shepherd is that several of our volunteers are former service users. In welcoming them to give their time to support others, we can also work closely with them to develop their skills, build experience and assess when they are ready for one of our more

formal programmes or external training opportunities. People can access the programme once they have attained a level of stability and we provide training, support, and opportunities for people to progress.

Ambassadors

The team of Good Shepherd ambassadors continue to support the work of the charity in different ways when they are available. A new ambassador was added to the group near the start of 2022 in the form of the Archbishop of Birmingham, the Most Rev Bernard Longley. Archbishop Longley said he was 'delighted and honoured' to be asked to become an ambassador. "The Good Shepherd reaches out to those who most deserve our love and support - those who are most in need," he added.

The team of ambassadors is completed by former Wolves and Nigeria goalkeeper Carl Ikeme, soul singer/songwriter Jaki Graham, BBC broadcaster Natalie Graham, Birmingham-based professional boxer Niall Farrell and Wolverhampton comedian Jack Kirwan.

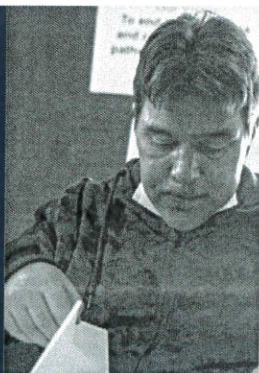
Media Coverage

The Good Shepherd continued to receive positive media coverage during 2022 across a variety of sources, including the Express & Star newspaper, BBC WM and Wolverhampton Community Radio. This covered both the fundraising and events connected with the 50th anniversary, but also important projects such as LEAP, which was launched with interviews to both local radio stations.

Also, on Liz Truss's first day as Prime Minister in September 2022, a crew from Channel 4 news visited the Good Shepherd as part of compiling a special report on what Wolverhampton was looking for from the new Prime Minister. This included interviews with staff and service users as part of a lengthy report which kicked off their flagship evening news bulletin.

"I have been helped by Good Shepherd before so it's nice to be able to volunteer and give something back. It gets me out and about and makes me feel I am doing something positive."

John





Good Shepherd Actions all projects snapshot 2022

Number of people who accessed our services

Individuals / Single **842** | Families **220**






1062

External referrals

We worked with agencies in the city including drug and alcohol treatment, housing agencies, financial support, and debt advice.

45 people with multiple complex needs supported through Housing First

Our Lived Experience into Action Project (LEAP) provided

	Interventions	353
	Housing advice sessions	72
	Employment, training, and education interventions	67
	Meaningful activity sessions delivered	158
	Attendances	562

No. of Meals / Food Interventions



13676

Dining service



3162

Family food pantry



6659

Take out



8996

Food parcel

Key Interventions



147

Addiction/
substance misuse



171

Support with
mental health



1057

Housing advice



489

Benefit advice

Outcomes

Better management of mental health	62		Gained accommodation	45
Better management of physical health	40		Training or education	52
Engaged in community activities	38		Improved money management	104
Gained paid employment	9			
Increased engagement in treatment services	20			
Started volunteering (internal)	12			

Our Achievements & Performance

Financial Review

Our operating surplus from charitable activities in 2022 was £46,102. This was a huge achievement as we have seen a significant rise in our utility bills and other purchases which are needed to run our services. In 2022 we received a capital grant from the St John of God Better Lives Grant Programme to refurbish 63 Waterloo Road allowing us to extend our services and then host partner agencies in that space.

Events & Fundraising

The 50th anniversary also offered the opportunity for a variety of different fundraising activities to support the work of the Good Shepherd.



During May 2022, Good Shepherd CEO Tom Hayden and Housing First Key Worker Paul Burns embarked on a 50-mile walk - 50 miles for 50 years - which took them from Wrexham to Snowdonia before being joined by other members of the team to climb Snowdon. This challenge alone ended up raising in excess of £4,000.

Other activities around the '50 Years of Good' fundraising campaign included a car wash, Sunday Lunch and sale of cakes made entirely from food waste as staff and volunteers aimed to raise funds and engage the local community.

This diversity of fundraising was also illustrated by the first Good Shepherd comedy nights, as first Clinton Baptiste - from Peter Kay's Phoenix Nights - performed to a sell-out crowd at the Cleveland Arms sports bar. Then, later in the year, Good Shepherd ambassador Jack Kirwan, also a comedian, was joined by several others including rising star Josh Pugh for another hugely successful event at the ECC Club. Both events not only raised valuable funds but also helped spread the message of the Good Shepherd and open the charity up to new audiences.

The Good Shepherd remain hugely appreciative of the close working relationship with Wolves FC, particularly Wolves Foundation, and Wolves Former Players Association. Being asked to partner up and help organise the annual Molineux Sleepout was another of the year's highlights and brought in over £25,000 of valuable fundraising.

Podcasts

During 2022 we continued to record and release a series of podcasts across many different subjects. These involved our service users sharing their stories but also influential people from the city including the Mayor at the time, Councillor Greg Brackenridge, and local Councillor Lynne Moran, also a Good Shepherd trustee. We also used the podcasts to inform people of the Good Shepherd's history and hopes for the future and help promote fundraising activities such as the '50 miles for 50 years' walking challenge.

Future Activities & Plans

Involving people that use our services in the review and development of the organisation is extremely important to us. In 2023 we will continue to hold regular service user forums, consultations, and will coproduce and roll out our Expert Advisor model. Expert Advisors will be people who have used/are using our services that want to get involved in improving the Good Shepherd and ensuring lived experience is at the heart of that development.

Next year we will be launching our new fundraising campaign Miles into Meals encouraging our supporters to take on challenges and raise funds and awareness for the Good Shepherd. Supporters are being asked to take on their own fundraising challenges, however big or small, and however they want to cover a distance.

This could be walking, running, cycling, swimming - even skipping - all great both for mental and physical health and also hopefully attracting sponsors to support the Good Shepherd. All funds raised will be invested directly into the Good Shepherd's free to access food and crisis support services.



To meet the growing demand for food and support relating to the ongoing cost of living crisis in 2023 we're launching a new "community shop", and a café social enterprise in Wolverhampton in partnership with the Wolves Foundation and supported by the local authority.

Statement of Financial Activities for the year ending 31st December 2022

	Note	Unrestricted Funds	Restricted Funds	Restricted Capital Funds	TOTAL	9 Months to 31.12.21
INCOME						
Donations						
General donations	2	148843	11125		159968	122936
Charitable Activities						
Grants and contracts	3	436702	240110		676812	693629
Miscellaneous income		12504			12504	17576
		598049	251235		849284	834141
EXPENDITURE						
Charitable Activities						
Food and client support	4	574333	216851		791184	512140
Property depreciation				12000	12000	5000
		574333	216851	12000	803184	517140
NET INCOME		23716	34384	-12000	46100	317001
Transfers between funds		3676	-3676			
		27392	30708	-12000	46100	317001
Other recognised gains/losses						
Net Movement in Funds		27392	30708	-12000	46100	317001
Funds brought forward		408469	18123	270000	696592	379591
TOTAL FUNDS	12	435861	48831	258000	742692	696592

All income and expenditure is from continuing operations

The café will directly employ at least two people with lived experience of homelessness, mental health, or poverty and financial exclusion. Once the project is established, we will develop a volunteering pathway where service users are trained to work in the shop and café, complete food hygiene and related training courses, and develop skills to move towards employment.

The café space will be used to raise awareness and engage the local community. It also offers an opportunity to fundraise to a different audience including highlighting individual and corporate giving, fundraising events, and selling items including our new Good Shepherd calendar. We will also sell artwork and greeting



cards which have been produced by clients from our meaningful activity programme with proceeds restricted to supporting the continuation of our art and meaningful activity projects.

From January 2023 the Housing First project becomes part of the wider Rough Sleeper support services. Good Shepherd will continue to deliver this crucial service and in the new year we will be working with partners in the city to integrate the service and develop pathways. We will also be launching a new accommodation for ex-offenders service securing private sector accommodation for people recently released from prison including early engagement work pre-release.

In 2022 we successfully bid for £70k capital funding to improve our premises by adding disabled access to the ground floor, updating the toilets, and installing a new reception which is more welcoming and hospitable for service users and visitors. Building work is due to start in January 2023 and will dramatically improve our facilities.

We will continue to explore opportunities to license and rent space to local organisations who share our values and ethos to generate income which can be used towards supporting people in our city.

Reserves Policy

The Trustees have examined the Charity's requirements for reserves considering the main risks to the organisation. They are committed to generating sufficient reserves to support current organisational activities in the event of any unexpected withdrawal or downturn in funding.

They have established a reserves policy to ensure that there are sufficient reserves to provide ongoing services to service users until alternative provision can be provided by other organisations. The Trustees consider that there should therefore be sufficient Net Current Assets readily available funds to meet six months running costs, with the current level of reserves at 25 weeks which the Trustees believe to be satisfactory.

Public Benefit

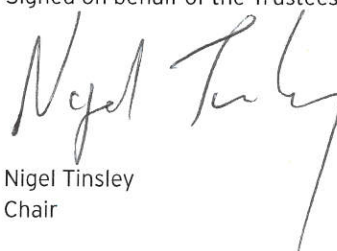
The Trustees have complied with the duty in Section 17 of the Charities Act 2011 and given careful consideration to the Charity Commission's general guidance on public benefit when reviewing our aims and objectives for the year. The Trustees consider how planned activities will contribute to the aims and objectives they have set.

Related Parties

Good Shepherd Services is a CIO and registered charity formed out of the work of the Little Brothers of the Good Shepherd in Wolverhampton. In 2021 St John of God Hospitaller Services (SJOG) a UK charity (1108428) became the sole member of the Good Shepherd Services, making us a wholly owned subsidiary but with an independent board of trustees, our own accounts, and the autonomy to set our own strategic direction and make our own operational decisions. SJOG provides support when needed to help us achieve our charitable objectives and we can draw on their considerable expertise and experience.

None of our trustees receive remuneration or other benefit from their work with the charity. Any connection or contractual relation between a trustee or senior manager of the charity and a related party must be disclosed to the full board of trustees. In the current year no such related party connections were reported.

Signed on behalf of the Trustees,


Nigel Tinsley
Chair

Independent Examiner's Report to the Trustees of Good Shepherd Services

I report to the charity trustees on my examination of the accounts of the charity for the year ended 31st December 2022 which are set out on pages 12 - 20.

Responsibilities & Basis of Report

As the charity's trustees you are responsible for the preparation of the accounts in accordance with the requirements of the Charities Act 2011 ('the Act').

I report in respect of my examination of the charity's accounts carried out under section 145 of the Act and in carrying out my examination I have followed all the applicable Directions given by the Charity Commission under section 145(5)(b) of the Act.

Independent Examiner's Statement

I confirm that I am qualified to undertake the examination because I am a member of the Institute of Chartered Accountants in England and Wales.

I have completed my examination. I confirm that no material matters have come to my attention in connection with the examination giving me cause to believe that in any material respect:

1. accounting records were not kept in respect of the charity as required by section 130 of the Act; or
2. the accounts do not accord with those records; or
3. the accounts do not comply with the applicable requirements concerning the form and content of accounts set out in the Charities (Accounts and Reports) Regulations 2008 other than any requirement that the accounts give a 'true and fair view' which is not a matter considered as part of an independent examination.

I have no concerns and have come across no other matters in connection with the examination to which attention should be drawn in this report in order to enable a proper understanding of the accounts to be reached.

Signed 

Date 31/8/23

ARW Storey
F.C.A.

Cotterell & Co
Chartered Accountants
The Curve
83 Tempest Street
Wolverhampton
WV2 1AA

Balance Sheet as at 31st December 2022

	Note		As at 31.12.21
Fixed Assets			
Tangible Fixed Assets	9	591102	604109
Current Assets			
Debtors	10	68940	74705
Cash at bank		359221	255830
		428161	330535
Creditors			
Amounts falling due within one year	11	-86571	-38052
Net Current Assets		341590	292483
Creditors			
Amounts falling due in more than one year		-190000	-200000
Net Assets		742692	696592
Funds			
Restricted funds		48831	18123
Restricted capital fund		258000	270000
Unrestricted and designated fund		435861	408469
	12	742692	696592

Signed by Nigel Tinsley on behalf of the Trustees

Signed Nigel Tinsley

Date 2-9-23

Statement of Cash Flows for the year ending 31st December 2022

		9 Months to 31.12.21	
Cash Flows From Operating Activities			
Net income		46100	317001
Adjustments For			
Purchase of fixed assets	-5217	-609273	
Depreciation of tangible fixed assets	18225	10224	
Increase/decrease in debtors	5766	-24650	
Increase/decrease in creditors	48517	169691	
		67291	-454008
Net Cash Provided by Operating Activities		113391	-137007
Cash Flows from Financial Activities			
Repayments of borrowings		-10000	
Net increase/decrease in cash		103391	-137007
Cash at beginning of year		255830	392837
Cash at End of Year		359221	255830

Good Shepherd Services CIO

Notes to the Financial Statements

for the year ending 31st December 2022

1. Accounting Policies

- a. Voluntary income is received by way of donations and gifts and is included in full in the Statement of Financial Activities when received. Gifts in kind are valued at their estimated value to the project and included under the appropriate headings.
- b. Intangible income is valued and included in income to the extent that it represents goods or services which would otherwise be purchased. Where it is not possible to value the goods or services, such as volunteer time or donated goods, the accounts do not include them. Grants including grants for the purchase of fixed assets are recognised in full in the Statement of Financial Activities in the year in which they are received to the extent to which the project has become entitled to them.
- c. Grants including grants for the purchase of fixed assets are recognised in full in the Statement of Financial Activities in the year in which they are received to the extent to which the project has become entitled to them. Unrestricted funds are donations and other income received or generated for the objects of the project without further specified purpose and are available as general funds.
- d. Restricted funds are to be used for the specified purpose as laid down by the donor. Expenditure which meets these criteria is identified to the fund.
- e. Unrestricted funds are donations and other income received or generated for the objects of the project without further specified purpose and are available as general funds.
- f. Designated funds are unrestricted funds earmarked by the trustees for particular purposes.
- g. Alterations to leasehold premises are written off in full in the year in which they are incurred.
- h. Fixed assets are for use by the charity in fulfilling its main charitable objectives and are capitalised and depreciated. Depreciation is provided on all fixed assets at rates calculated to write off the costs of each asset over its estimated useful life at the following rates:

Equipment	33% per annum - straight line basis
Freehold Property	2% per annum - straight line basis
Motor Vehicles	33% per annum - straight line basis
Computers	33% per annum - straight line basis

2. Donations

	Unrestricted	Restricted	9 Months to 31.12.21
Churches and faith-based giving	9726		12514
Gift Aid recovered	6360		24342
Legacies	11600	8325	5400
Individual giving	93203	800	70888
Companies and organisations	27954	2000	9792
	148843	11125	122936

3. Income from Charitable Activities

	Unrestricted	Restricted	9 Months to 31.12.21
Contracts			
Black Country Health Care NHS Trust	38600		
City of Wolverhampton	346380	43059	243426
	384980	43059	243426
Grants			
PAR Charitable Trust			10000
Community Initiative Fund			3500
Maximus Foundation			2500
Grimmit Trust			2000
R and D Turner Trust	5000		3000
Arnold Clark			1000
Garfield Weston			25000
Mid Counties Co-op			2642
Sainsburys			1000
Eveson Charitable Trust			285000
E and D Cadbury Trust			2000
Wolverhampton University		3750	1667
Mayor's Ward Fund		1000	
Charles Burrrell 2016 Settlement			10000
Tudor Trust		33334	31518
Tudor Trust		2000	
T and GWU		2944	1846
29th May 1961 Charitable Trust	7500		7500
Wolves Foundation Virtual Sleepout			25000
Neighbourly(Lidl)	4150		
Big Give Trust	1250	2250	
PB Dumbell	2000		
Tesco	1125		
Lord Barnbys Foundation	2000		
February Foundation	3000		
Beatrice Laing	5000		
Adint Trust	10000		
Millie's Watch	5000		
Muras Baker	1300		
Grimmit Trust	3000		
Hedley Foundation		2200	
Oak Foundation		52094	
Porticus		37493	
St John of God Better Lives capital grant		58091	
Grants £1000 and under	1397		1527
	51722	195156	416700
less: deferred to future periods		-23608	-24879
add: deferred from previous periods		25503	58382
	51722	197051	450203
Total grants and contracts per SoFA	436702	240110	693629

Adint Trust	10000		
Millie's Watch	5000		
Muras Baker	1300		
Grimmit Trust	3000		
Hedley Foundation		2200	
Oak Foundation		52094	
Porticus		37493	
St John of God Better Lives capital grant		58091	
Grants £1000 and under	1397		1527
	51722	195156	416700
less: deferred to future periods		-23608	-24879
add: deferred from previous periods		25503	58382
	51722	197051	450203
Total grants and contracts per SoFA	436702	240110	693629

JANUARY – DECEMBER 2022

4. Food & Client Support

	Food	Client Support	Total	9 Months to 31.12.21
Salaries	115100	379068	494168	328369
Depreciation	8681	3348	12029	1074
Training		1380	1380	
Volunteer expenses	162	714	876	461
Equipment costs	570		570	850
Cleaning and waste disposal	7430		7430	3550
Food costs	3765	10550	14315	9601
Client welfare		69581	69581	23808
Disposable items	4085	123	4208	3488
Property costs	11502	1500	13002	8562

Tenancy Support		5228	5228	13111
Motor and travel expenses	3475	3022	6497	7304
Telephone	3264	3280	6544	2868
Office expenses	448	5583	6031	5949
Support costs	25180	82927	108107	103145
	183662	566304	749966	512140

5. Support Costs

	9 Months to 31.12.21	
Salaries	33607	26743
Depeciation	6196	
Training	3304	4150
Volunteer expenses	301	
Professional fees		4056
Property costs	15309	23593
Rent		11667
Motor and travel expenses	1479	
Independent examintion	810	456
Marketing and communications	27594	18789
Trustee expenses		
IT costs	8675	2192
Telephone	5024	3774
Insurance	3365	2989
Other costs	2443	4736
	108107	103145
Major property renovation	53218	

Property costs are allocated on the basis of space used

Support costs are allocated on the basis of staff numbers

JANUARY – DECEMBER 2022

10. Debtors

		31.12.21
Debtors	65566	18702
Prepayments	3374	56004
	68940	74706

11. Creditors

		31.12.21
Amounts Falling Due Within One Year		
Trade creditors	170	
Accrued expenses	-51742	-2169
Taxes and pensions	-11391	-11004
Deferred income	-23608	-24879
	-86571	-38052
Amounts Falling Due - More Than One Year		
Property loan	-190000	-200000

The property loan is interest free and repayable as reserves permit

12. Movement in Funds

	Brought Forward at 1st Jan 2022	Income	Expenditure	Transfers	Carried Forward at 31st Dec 2022
Restricted Funds					
Client welfare	10389	101057	-86500	-552	24394
Property renovation		58091	-48001		10090
Capital Fund	270000		-12000		258000
Salary funds	7734	92087	-82350	-3124	14347
	288123	251235	-228851	-3676	306831
Designated Funds					
Property renovation fund	125000				125000
Unrestricted Funds					
Food and client support	283469	598049	-574333	3676	310861
Total Funds	696592	849284	-803184		742692

13. Comparative Statement of Financial Activities

	Unrestricted Funds	Restricted Funds	9 months to Dec 2021	Year ended 31.12.22
INCOME				
Donations				
General donations	120997	1939	122936	159968
Charitable Activities				
Grants and contracts	349495	344134	693629	676812
Miscellaneous income	17576		17576	12504
	488068	346073	834141	849284
EXPENDITURE				
Charitable Activities				
Food and client support programmes	404005	113135	517140	796184
	404005	113135	517140	803184
NET INCOME	84063	232938	317001	46100
Transfers between funds	9266	-9266		
	93329	223672	317001	46100
Other recognised gains/losses				
Net Movement in Funds	93329	223672	317001	46100
Funds brought forward	315140	64450	379590	696592
TOTAL FUNDS	408469	288122	696591	742692

All income and expenditure is from continuing operations

